

First Responder Field Scenarios

Standard Operating Procedures:

Size-Up, Approach, Immobilize, Extinguish



Vehicle on Fire

✓ **NO** increased risk to first responders



Vehicle Immersion in Water

✓ **NO** increased risk of shock hazard

High Voltage Disconnect Procedure

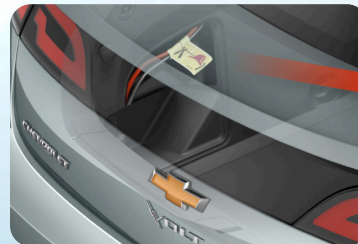
1 Turn Vehicle OFF
(push Start/Stop button – gauges turn off)



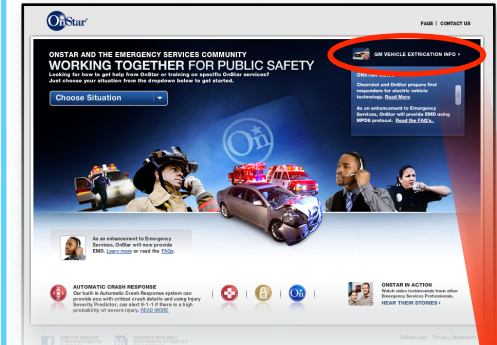
2 Access 12V Cut Locations
(left side of trunk)



3 Cut and Remove Section of 12V Cable



Resources/Information



www.onstar.com/publicsafety



www.gmstc.com



www.evsaftytraining.org



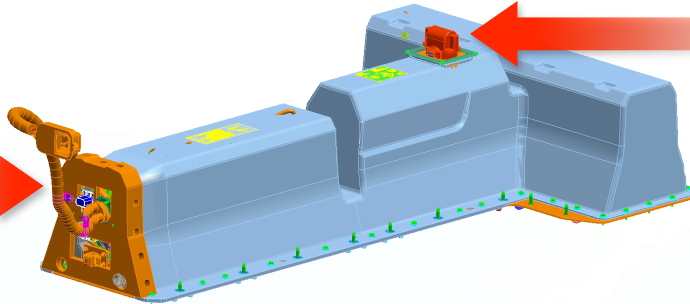
VOLT

First Responder Quick Reference

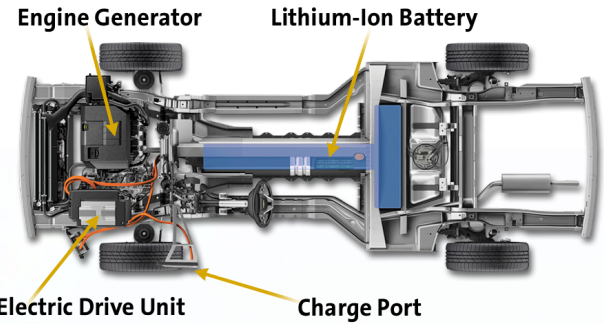
Sealed Battery Pack, Electrically Isolated System



Electrical Interface to Vehicle



Manual Service Disconnect



Engine Generator

Lithium-Ion Battery

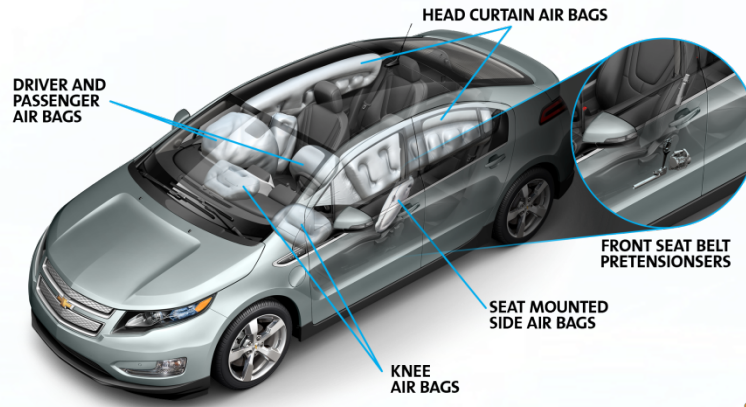
Electric Drive Unit

Charge Port

HIGH STRENGTH STEEL



AIR BAG & INFLATOR LOCATIONS



HEAD CURTAIN AIR BAGS

DRIVER AND PASSENGER AIR BAGS

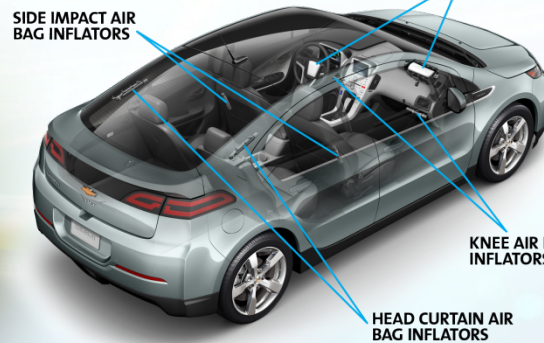
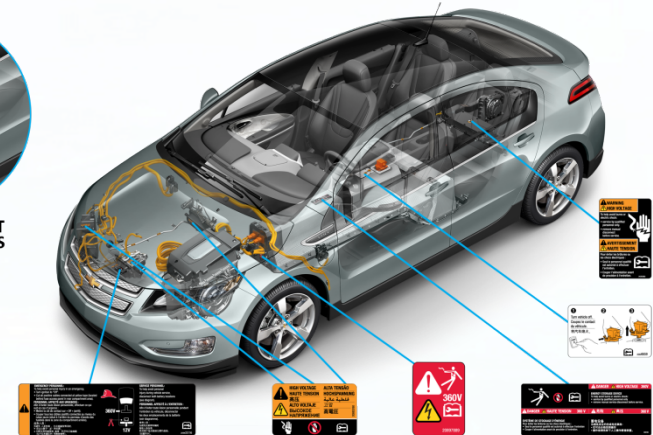
FRONT SEAT BELT PRETENSIONERS

SEAT MOUNTED SIDE AIR BAGS

KNEE AIR BAGS

DRIVER AND PASSENGER AIR BAG INFLATORS

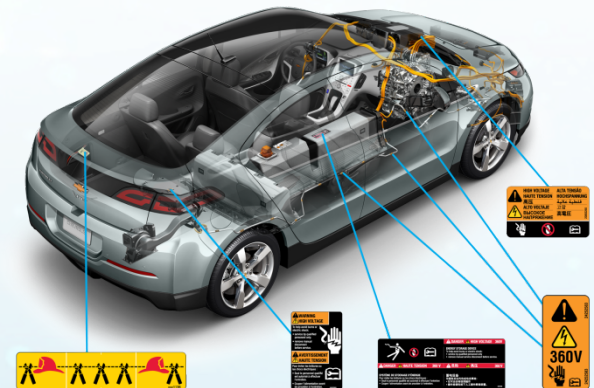
HIGH VOLTAGE LABELS



SIDE IMPACT AIR BAG INFLATORS

KNEE AIR BAG INFLATORS

HEAD CURTAIN AIR BAG INFLATORS



360V

360V